



Hibulb Cultural Center Inquiries

Student Name:

Joseph

1-30-18

Directions: We've watched the Tulalip History Minute Videos in class. We've read articles, documents and stories. Now you will get to actually investigate and see the artifacts in the museum. Complete as many of the investigative inquiries as you can at the museum. We will finish the inquiries at school.

Welcome Figures

Sketch the Welcome Figures below and label what the different designs on the figures represent.



This welcome figure is carved from a cedar log. The welcome figure it is called warrior. Both of the welcome figures are made from the same cedar log.

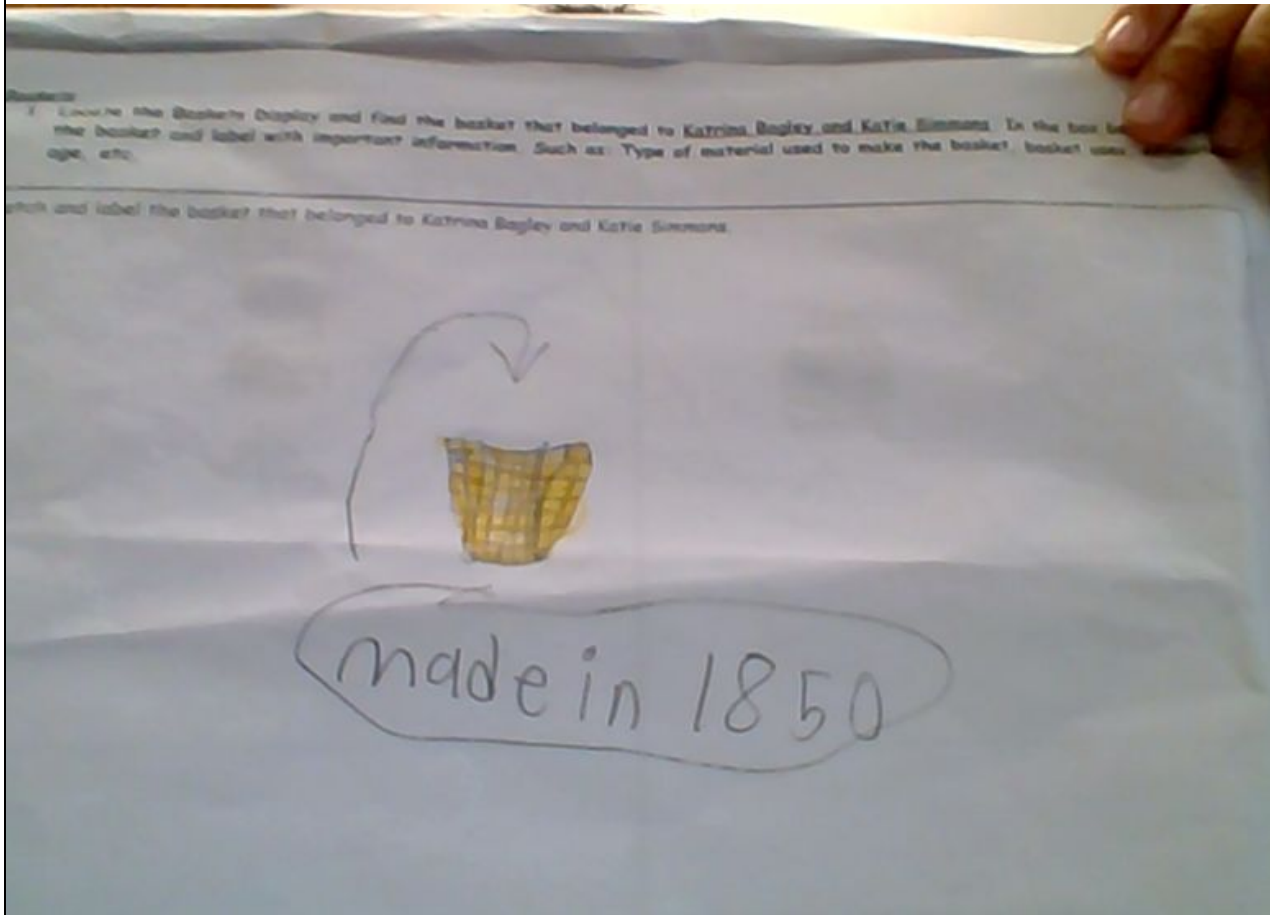
This welcome figure is made of the same Cedar tree as the warrior. It is called Kaye? It means grandma.



Baskets

1. Locate the Baskets Display and find the basket that belonged to **Katrina Bagley and Katie Simmons**. In the box below, sketch the basket and label with important information. Such as: Type of material used to make the basket, basket uses, estimated age, etc.

Sketch and label the basket that belonged to Katrina Bagley and Katie Simmons.



Katrina Bagley and Katie Simmons' basket was woven with cedar strips. They think it was made in 1850. Baskets were for carrying food and storage.



Katrina Bagley Katie Simmons

2. Locate 2 other baskets. Sketch the baskets in the boxes below and label with important information. Such as: Type of material used to make the basket, basket uses, estimated age, etc.

Sketch and label a 2nd basket of your choice.



They think this basket is made in 1900. The basket was used for carrying fruits and veggies. The big baskets were used for carrying baby's.

Sketch and label a 3rd basket of your choice.

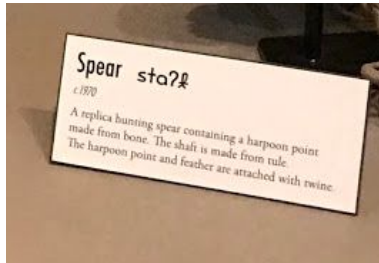


They think this basket is made on 1900 basket are used for carrying fruits and veggies big baskets are used for carrying baby's.

Summer Camp House

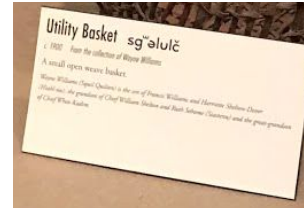
1. Locate the Summer Camp House display. In the boxes below, sketch and label 6 different tools that the Tulalip people used at their summer camp house site. Describe what the tool was used for, type of material used to make it, name of the tool, etc.

1. Tool Name: **Spear**

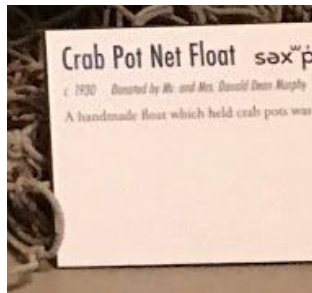


They use the spear for hunting fish. The spear was made in 1970.

2. Tool Name: **Utility Basket**



3. Tool Name: **Crab Pot Net Float**

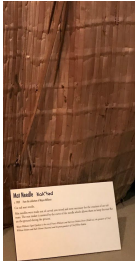


The Crab Pot Net Float is used for putting the pot under the net when needed for getting crabs it is made in 1930.

4. Tool Name: **War Club**

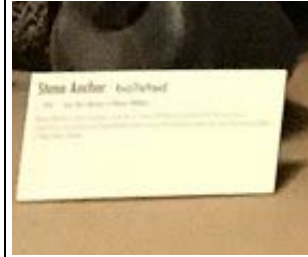


5. Tool Name: **Mat Needle**



The Mat needle is used for making cedar mats it is made on 1930.

6. Tool Name: **Stone Anchor**



The Stone Anchor is used for when the need the canoe to stop floating away it is made in 1900.

2. In the box below, sketch and describe how the summer camp house was built.



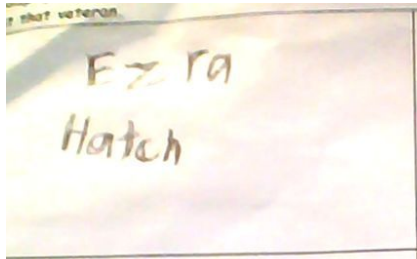
The summer camp is made out of cedar mats it was tightened with cedar twigs.

3. Why did the Tualip people move to a summer camp house? They saw butterflies then they decided to move to the summer camp house.

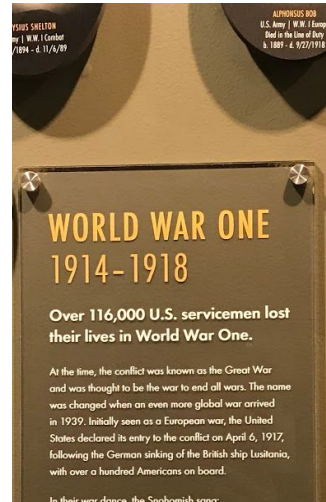
Honoring Veterans

1. Visit the display that honors the veterans. Choose one person from each of the following wars and write down the information given about that veteran.

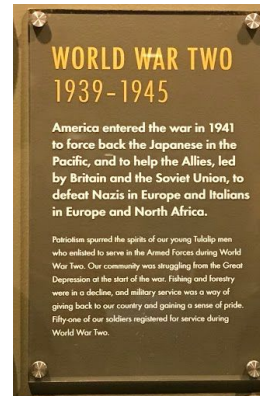
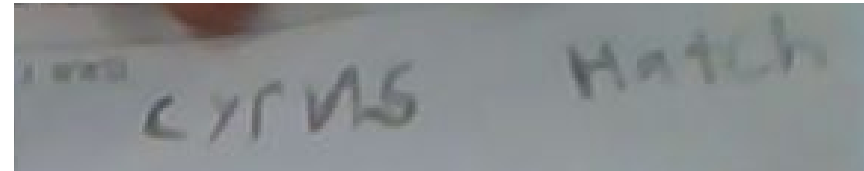
1. WWI



Ezra Hatch is a soldier from world war 1. one thing america did not win World War 1 it was in 1914 to 1918.

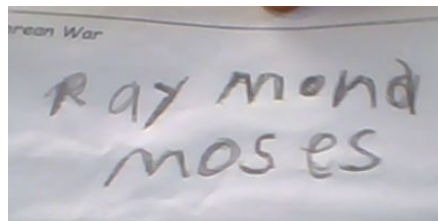


2. WWII



Cyrus Hatch is a family member of Ezra Hatch but Cyrus Hatch fought in the World War 2. It started in 1935 to 1945.

3. Korean War



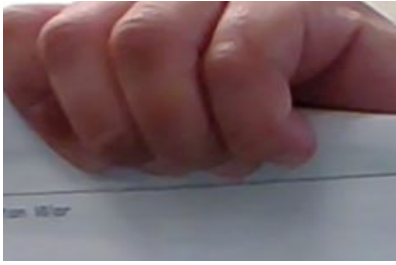
Raymond moses helped fight in the Korean War. It started at 1950 to 1953. It was when North Korea invaded South Korea

4. Vietnam War

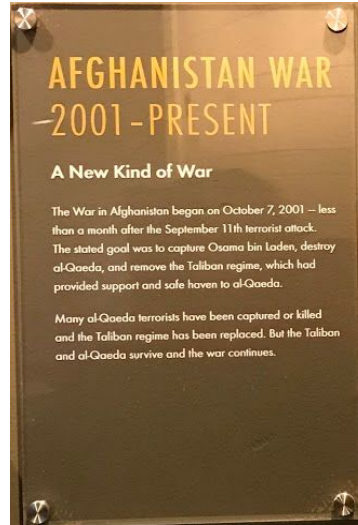


Calvin Taylor fought in Vietnam War it was 1965 to 1973 the forces of america helped in South Vietnam.

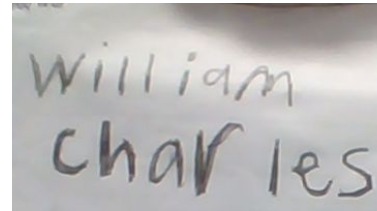
5. Afghanistan War



Kenneth Wells fought in the Afghanistan War the Afghanistan War is never ending it started on 2001.



6. Iraq War



William Charles fought in the Iraq War it started on 2003 it's never ending like Afghanistan War.



The Gateway Poles

1. Visit the Gateway Poles display and answer the following questions:

- Who carved the original Gateway Poles? It was carved Dave Guss, Neil Charles, Maurice Alexander, Wesley Charles and Robert Guss.
- When were they carved? It was dedicated on 1940.
- Where were the original Gateway Poles located and what was on top of them? It was located at Fire Trail Road at the entrance of the Tulalip Indian Reservation. The canoe is on top of the Gateway Poles.
- What happened to the original Gateway Poles? The original Gateway poles got snapped in half from vandals. Vandals are people who break things.

Find four other artifacts in the museum that you found interesting. Use the boxes below and on the next page to sketch and label. (What was the artifact? What was it used for? How was it made?)

1. Artifact Name: Canoe



This canoe is for hunting fish and traveling it can hold a lot of people in it.

2. Artifact Name: Canoe



This canoe is for short distances the canoe is for hunting fish.

3. Artifact Name: Katrina Bagley and Katie Simmons basket



This basket was woven by Katrina Bagley and Katie. There are some blueberry stains in it it was made by cedar twigs.

4. Artifact Name: Salmon Person



This is a model of a salmon person salmon people are a legend.